

# groovy baby

**This 1970s home with a mossy slate mansard roof has been artfully renovated inside, all without increasing the home's footprint**

WORDS CARROL BAKER  
PHOTOGRAPHY RORY GARDINER





## EDITOR'S FAVOURITE

Like many homes of its era, the landscape was separate. Now it's connected to internal spaces, adding a sense of continuity and flow between indoors and out

### ABOVE

The striking mansard roof sets the tone for the interior

### OPPOSITE

Select materials serve to create a handsome interior

**T**his richly textured home embraces its nostalgic past with modern inclusions and improved comfort. Melissa Bright, principal and design director of Studio Bright, describes the residence as a quintessential offering from its time. "It was deserving of retention for its time-marking contribution to a richly textured city that values its past," she says.

However, spatial arrangements and configurations, and poor connection to parkland and streetscape left ample room to ponder ways to transform it into a beautiful forever home for the older homeowners and their dog.

They loved their home and were looking for a comfortable abode that would take into account their future requirements. The house had good bones, but needed to be internally reconfigured, and modern amenities added, as well as re-leveling and detailing. Melissa says Studio Bright saw an opportunity to renovate rather than design something new. The clients happily agreed.



## DETAILS

**HOUSE** Mansard House  
**LOCATION** Kew East, Vic  
**DATE COMPLETED**  
August 2022

**LEFT**

A cosy lounge space is decorated to reflect contemporary charm

**BELOW**

Fresh inviting breezes flow through the many large openings

**OPPOSITE**

Well-positioned dividers segment the open floor plan



“Our clients intend ageing at home and wished for the house to throw its arms out to extended family as well as providing amenity for features such as a gym, lift, bike storage room and sewing room,” she explains. Cramped interiors were opened up to welcome in light and maximise views to neighbouring parkland. The clients also wanted a new stair and lift to improve accessibility across both levels.

The ground floor has living, dining and kitchen spaces, as well as the master suite. Guests are well catered for with a lounge, two bedrooms and an ensuite. There’s also a bathroom, powder room, laundry and terraces on this level. The lower ground floor has a gym, sewing room and storage.

Generous room sizes were the order of the day, with a rich and sophisticated material palette. Divider elements were added to open-plan living spaces to respect the unique quality of each area. Remnants of an existing brick wall between kitchen and dining and a floating joinery piece helped to offer a degree of separation.

The interiors are warm and welcoming. “The stairwell opens up like a secret passage bathed with light, the metallic bronze walls and warm walnut veneer providing a warm cocoon and reflecting the light through to the rooms below,” says Melissa.





**LEFT**

Beautiful brickwork inside adds character and a mid century modern vibe

**BELOW**

A lightwell draws the eye upward in the bathroom space

**OPPOSITE**

The modern kitchen blends brick, marble, bluestone and timber with finesse

**WE LOVE**

**The deep-green marble and metallic paints that add a feeling of opulence**

The floors are bluestone, the ceilings and soffits a Victorian ash timber lining board. Steel-framed windows complement the slate and brick.

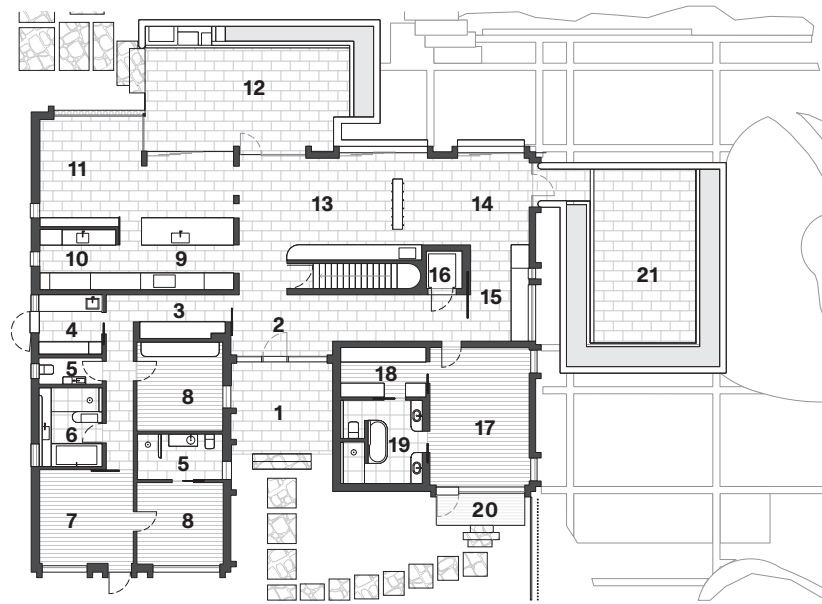
Outside, a new balustrade lightens and refines the way the mansard roof appears. "It gains elegance and a floating quality that redefines the way the mass sits in the landscape," shares Melissa.

The home has street appeal in spades. It has an astute presence, with ample visual allure. Melissa says the adjoining brick garden walls are cut and modulated to share glimpses of lemon-scented gums around the entry in an offering of civic generosity to pedestrians. "This is a gesture that is invisible to the visitor but demonstrates the power of architecture in the aggregate of many small, considered gestures that give back to the public," she explains.

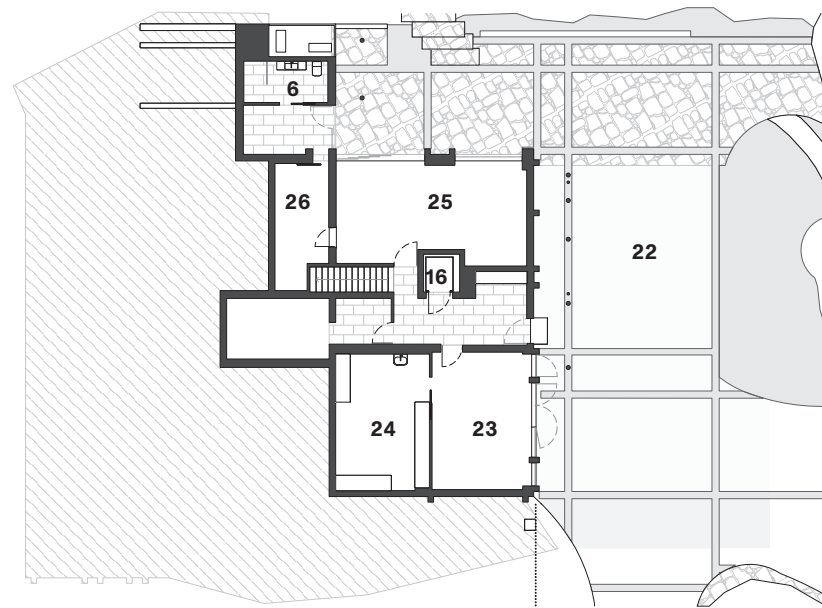
The home is sustainable in that it seeks to improve comfort without adding floor space. New heat pumps for hot water, hydronic heating and air-conditioning and solar were also added.

This project is distinctive in that it challenges the notion that starting with a clean slate should be the go-to for homes of this era. "Typically, houses like these are demolished for the next big thing. So we were delighted by the opportunity to renovate this one," says Melissa. 🏡





**GROUND FLOOR PLAN**



**BASEMENT FLOOR PLAN**

**LEGEND**

- |                 |                   |
|-----------------|-------------------|
| 1 Porch         | 14 Lounge         |
| 2 Entry         | 15 Study          |
| 3 Storage       | 16 Lift           |
| 4 Laundry       | 17 Master bedroom |
| 5 WC            | 18 WIR            |
| 6 Bathroom      | 19 Master ensuite |
| 7 Guest lounge  | 20 Verandah       |
| 8 Guest bedroom | 21 Terrace        |
| 9 Kitchen       | 22 Garage         |
| 10 Pantry       | 23 Sewing room    |
| 11 Living       | 24 Robe store     |
| 12 Terrace      | 25 Gym            |
| 13 Dining       | 26 Bike storage   |

**RIGHT**

The stunning stairwell is a feature

**STRUCTURAL TEAM**

Engineer Meyer Consulting

**SERVICES**

Landscape designer Sam Egan Gardens

**FIXTURES & FITTINGS**

Kitchen stone and tiles, stone bench, splashbacks Marella Granite & Marble

Ensuite Cerdomus

Bathroom Fibonacci

Induction cooktop ASKO

Dishwasher and refrigerator Miele

Tapware Brodware

Kitchen and pantry sink mixer Franke

Flooring Tongue & Groove; Sai Stone

Lighting Artefact; Laal; Artemide; Koda

Back-to-wall bath Kaldewei

Kitchen sink Franke from E&S Trading

Duo in white Bathe

**FURNITURE AND FURNISHINGS**

Reno bench Grazia & Co

Diiva swivel stools Grazia & Co

Agent 86 sofa Grazia & Co

Marlo sofa Jardan

Lola armchairs Jardan

Kai 42 chair Great Dane

Other furniture Muuto from Living Edge

**PROJECT TEAM**

ARCHITECT AND INTERIOR DESIGNER Studio Bright,  
studiobright.com.au

BUILDER ProvanBuilt, provanbuilt.com.au

