

(ROBIN BOYD AWARD)

Hedge and Arbour House

Studio Bright

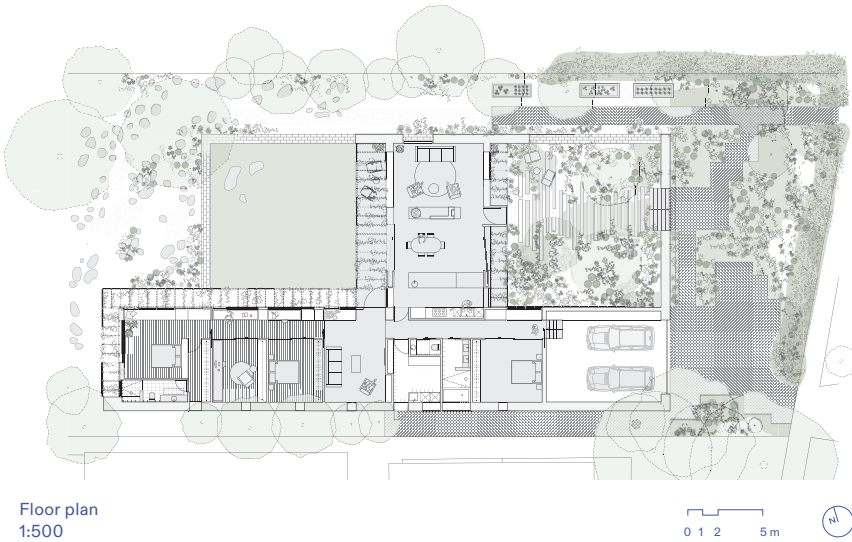
(COUNTRY) Wurundjeri
(LOCATION) Melbourne, Vic

(JURY CITATION)
One of the most exciting themes in this year’s awards is the way architects and clients are exploring new approaches to living. Hedge and Arbour House by Studio Bright is a standout example. Guided by the client’s wish to foster a closer connection to nature, the house is designed to be almost entirely enveloped by the landscape.

Conceptually, it draws the bushland at the rear of the block forward. From the street, a formal hedge conceals the unexpectedly wild landscape beyond. This sharp contrast underscores the house’s radical rethinking of how we might live. The entry sequence through walled gardens makes the choice explicit – offering visitors two scenarios, and in doing so, prompting reflection on how we want to inhabit our world. It is rare for a house to so directly challenge us in this way.

The house itself is wrapped in a galvanised steel-mesh arbour, a simplifying element that also allows the landscape to subsume the house almost entirely. Where openings exist, they are robust, but the thoughtful details and composition of openings and external spaces elevate the house aesthetically. Once inside, the spaces provide a calming refuge in constant connection to the views of the bush landscape beyond. The architects have found just the right balance between living well and modestly. Leaving this house, moving from the wild landscape through the manicured hedge, feels like we have been given a glimpse of a glorious future.

Architect Studio Bright; Project team Melissa Bright, Emily Watson, Rob McIntyre, Pei She Lee, Maia Close; Builder Built by Guild, Frank (Victoria) Pty Ltd; Landscape architect Sarah Hicks; Landscape contractor Lucida Landscapes; Engineer Meyer Consulting; Building surveyor Fotia Group; Photographer Rory Gardiner



(COVER PHOTO: JAMES)

Hedge and Arbour House Studio Bright

(COVER PHOTO)
(LOCATION)

Wurundjeri
Melbourne, Vic

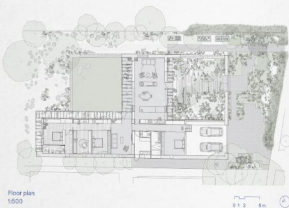
(JURY CITATION)

One of the most exciting themes in this year's awards is the way architects and clients are exploring new approaches to living. Hedge and Arbour House by Studio Bright is a standout example. Guided by the client's wish to foster a closer connection to nature, the house is designed to be almost entirely enveloped by the landscape.

Conceptually, it draws the bushland at the rear of the block forward. From the street, a formal hedge conceals the unexpectedly wild landscape beyond. This sharp contrast underscores the house's radical rethinking of how we might live. The entry sequence through walled gardens makes the choice explicit – offering visitors two scenarios, and in doing so, prompting reflection on how we want to inhabit our world. It is rare for a house to so directly challenge us in this way.

The house itself is wrapped in a galvanised steel-mesh arbour, a simplifying element that also allows the landscape to subsume the house almost entirely. Where openings exist, they are robust, but the thoughtful details and composition of openings and external spaces elevate the house aesthetically. Once inside, the spaces provide a calming refuge in constant connection to the views of the bush landscape beyond. The architects have found just the right balance between living well and modestly. Leaving this house, moving from the wild landscape through the manicured hedge, feels like we have been given a glimpse of a glorious future.

Architect: Studio Bright; Project team: Melissa Briggs, Emily Walker, Ross McIntyre, Pauline Lee, Anna Oliver; Builder: South of Gully; Project Director: Polly Lee; Landscape architect: Sarah Hicks; Landscape contractor: Lucinda Lennings; Engineer: Meyer Consulting; Building services: Peter Green; Photographer: Polly Gordon



Floor plan
1:500

