

HOUSES  
AWARDS

WINNER

2025

NEW HOUSE OVER  
200 SQUARE METRES

HEDGE  
AND  
ARBOUR  
HOUSE

BY STUDIO  
BRIGHT

Hedge and Arbour House captivated the jury with an intriguing yet rigorous built form interlaced with landscaped spaces. The home offers an alluring sense of wildness and deference to nature, its harmonious composition hovering between encroaching suburbia and natural bushland.

The architects have worked cleverly with the found conditions – a tall sculptural hedge to the suburban street, and site topography that dips down at the rear into a gully of natural wilderness – to craft a home that breathes and expands into the landscape, and whose architecture dissolves into its site.

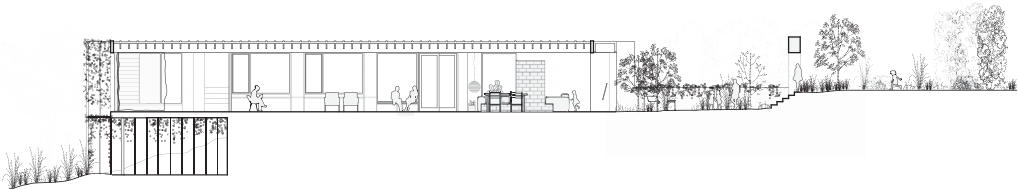
Robust materiality is elegantly handled. Extensive use of steel mesh as plant trellis reads as a soft veil rather than a hard barrier, and its depth forms a habitable, shaded threshold between house and garden. Large openings in the screen frame views of the landscape, while blockwork walls to the street have a ruin-like quality as they describe external spaces, suggesting edges for perching that may eventually be consumed by the loose native garden. The neat square of lawn to the west invokes the suburban context and is the sole “tame” outdoor space from which to view the treetops beyond.

With its soft and subtle edges, this home looks afresh at the relationship between house and landscape, both tended and wild. The jury would be delighted to see such ideas proliferate in our suburbs.

*From the Houses Awards jury.*

Award for New House  
over 200 square metres  
is supported by

BRICKWORKS

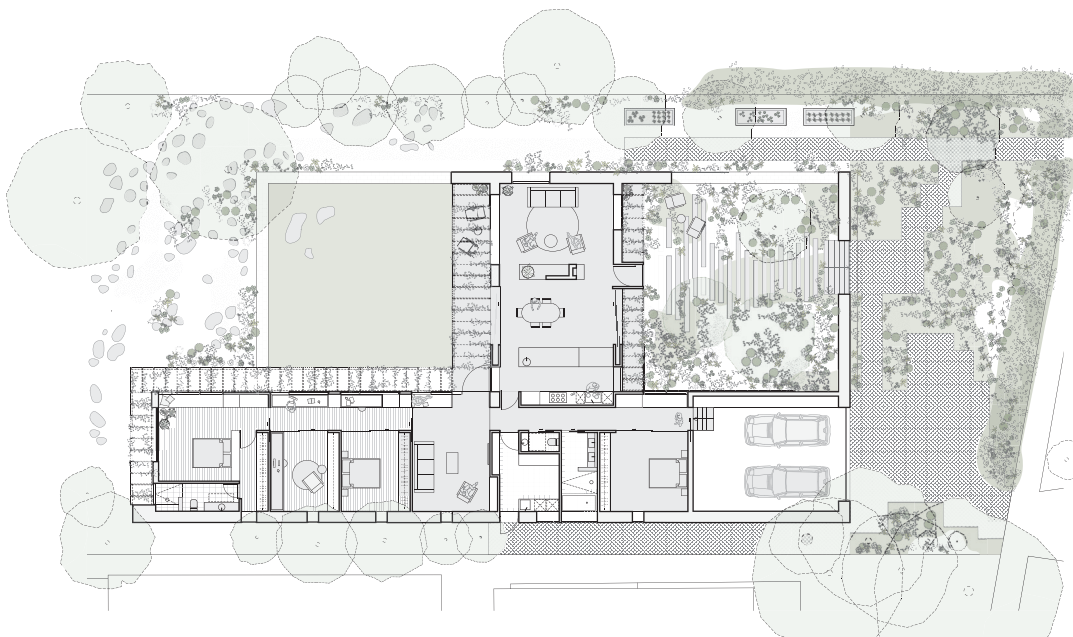


Section 1:400

0 5m







Floor plan 1:400

0 5m ↑

**Hedge and Arbour House**  
is built on the land of the  
Wurundjeri people.  
**Location**  
Naarm/Melbourne, Vic

**Architect**  
Studio Bright  
+61 3 9853 4730  
[info@studiobright.com.au](mailto:info@studiobright.com.au)  
[studiobright.com.au](http://studiobright.com.au)

**Project team** Melissa Bright, Emily Watson, Rob  
McIntyre, Pei She Lee, Maia Close **Builder** Built by  
Guild, Frank (Victoria) **Engineer** Meyer Consulting  
**Landscape architect** Sarah Hicks **Landscape**  
**contractor** Lucida Landscapes **Surveyor** Fotia Group

**Photographer**  
Rory Gardiner